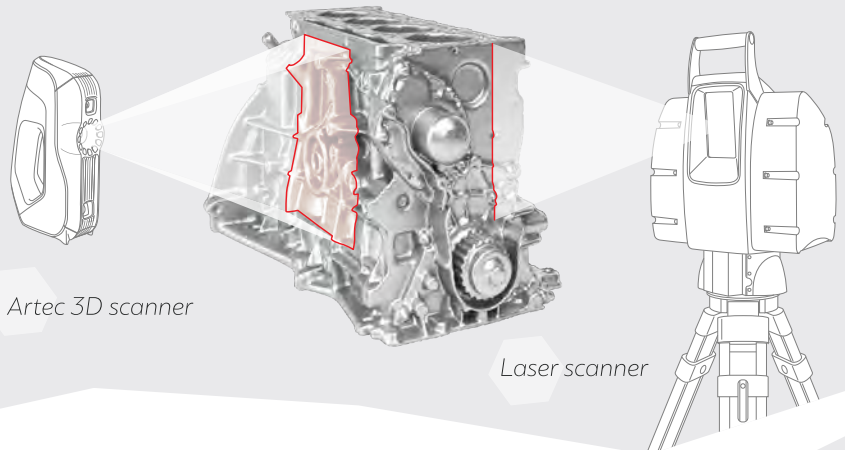


ADVANTAGES

OF ARTEC 3D SCANNERS VS. LASER SCANNERS

Speed

Artec 3D scanners capture over ten times faster than laser scanners. While laser scanners can only capture the small area over which the laser line passes, Artec scanners have a much wider field of view. Space Spider scans an area of 90-180 mm at 8 frames a second, while Eva captures 200-500 mm at 15 frames a second.



Cost effective

Artec 3D scanners are more affordable than laser scanners and so offer a much faster return on investment.



No preparation

In order for tracking to work in laser scanners you need either to set up additional equipment or to stick targets on your scanning object. Artec scanners, however, are able to track using just the geometry or texture of the object itself.

Portability

Most laser scanners are stationary and are set up on a tripod. The object is usually placed on a turntable, or the scanner, together with the tripod, needs to be moved every few seconds. With Artec scanners, there is no need for a turntable, you can just walk around the object and make a quick, detailed scan. Furthermore, Artec scanners are handheld, tablet compatible and can be powered for up to 6 hours by the Artec battery pack, and so allow for maximum flexibility.

