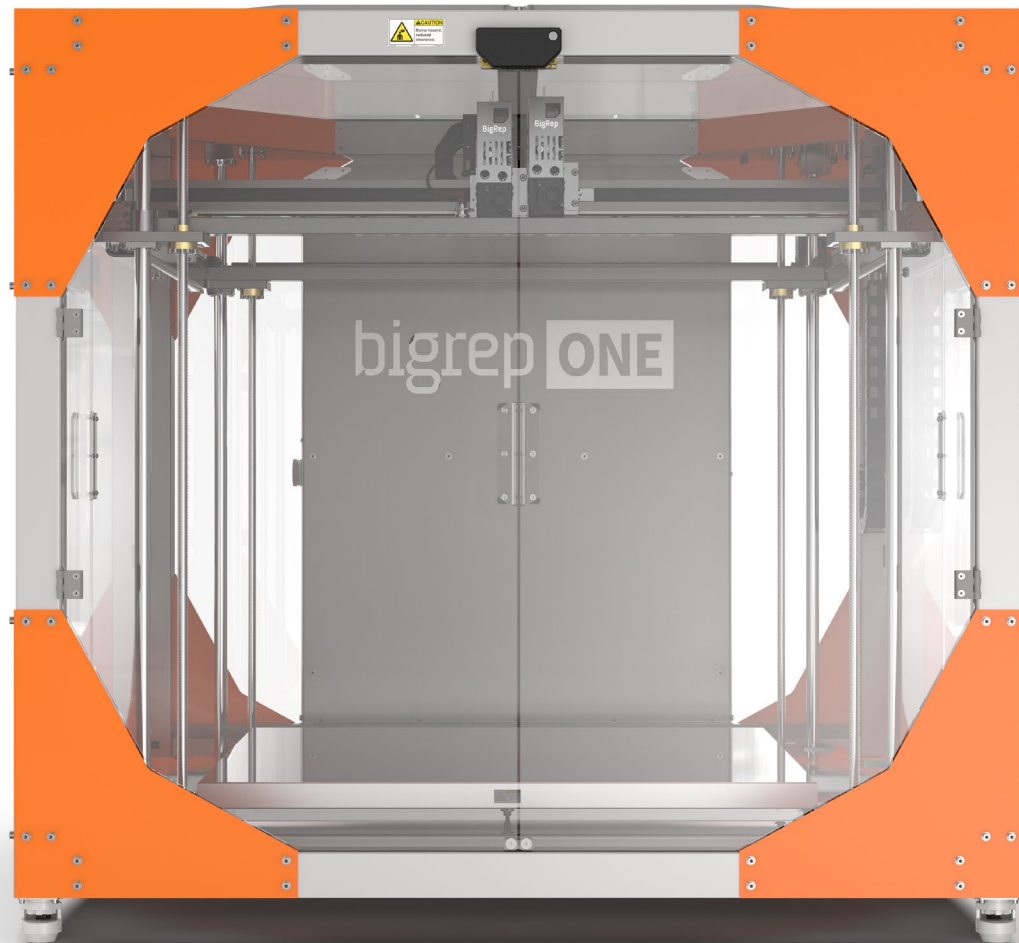


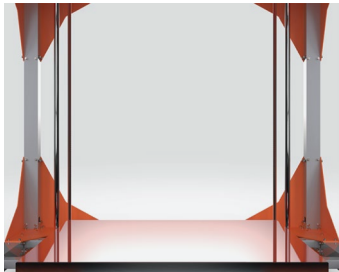
bigrep **ONE**



LARGE-SCALE **INNOVATION.**
LIMITLESS **CREATIVITY.**

The BigRep ONE is an award-winning, large-format 3D printer at an accessible price point. With over 500 systems installed worldwide, it's a trusted tool of designers, innovators, and manufacturers alike. Featuring a massive 1m³ build volume, the fast and reliable ONE brings your designs to life in full scale. Perfect for prototyping, production, and a wide range of applications, the ONE comes equipped with two BigRep fiber-ready Power Extruders (PEX) that feature interchangeable hotends with 0.6, 1.0 and 2.0 mm nozzles for maximum detail or high-flow additive manufacturing.

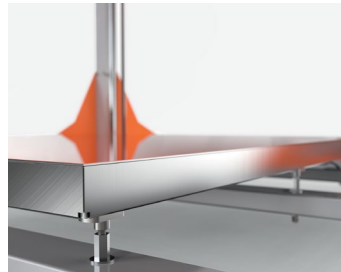
BIGREP ONE KEY FEATURES



Large-Scale 3D Printing

The Massive Build Volume

With a one-cubic-meter build volume, the award-winning BigRep ONE is designed to produce massive 3D prints for demanding and geometrically complex applications. Go beyond the limited capabilities of smaller systems and use the ONE to print your parts in full scale.



Consistent & Efficient

The Semi-Automatic Print Bed

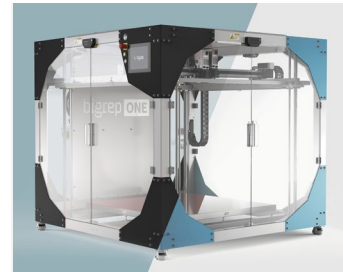
The heated print bed is coated with a polyimide foil that provides optimal adhesion throughout the printing process. Thanks to an integrated inductive sensor, the ONE uses semi-automatic bed leveling to streamline build platform calibration and ensure peak performance and consistent prints.



Modular & Independent

The Fiber-Ready Power Extruder

BigRep's fiber-ready Power Extruder is available for single or dual extrusion on the BigRep ONE. It consistently produces high-quality, full-scale parts in a range of BigRep filaments such as bio-polymers, water soluble support, and fiber-reinforced, as well as third party materials.



Modules & Add-Ons

Configure your solution.

Configure your custom ONE and choose from single, dual, or twin extruder modes plus add-ons like an enclosed housing and even the printer's color to create the perfect machine just for you. As your 3D printing needs evolve, simply upgrade your ONE with additional features to grow along with you.

TECHNICAL SPECIFICATIONS

Version	BigRep ONE.4
Build Volume	x 39.5 y 39.5 z 39.5 in (x 1005 y 1005 z 1005 mm)
Compatible BigRep Materials*	HI-TEMP, HI-TEMP CF, PETG, PLA, PLA Antibacterial, PLA Ultralight, PLX, Pro HT, TPU
Support materials*	BVOH
Layer heights	0.3 mm, 0.6 mm, 1.0 mm Other layer heights supported through slicer software.
Max. Speed Max. Acceleration (XY)	500 mm/s 400 mm/s²
Extruders	Fiber-Ready Power Extruder (PEX) Interchangeable hotend with 0.6mm, 1mm and 2mm nozzles.
Printing Technology	Fused-Filament-Fabrication (FFF / FDM)
Print Bed Temperature	Max. 176 °F (80 °C)
Printer Weight	Approx. 1014 lbs (460 kg) without housing
Size	x 72.8 y 88.6 z 67.9 in (x 1850 y 2250 z 1725 mm)
Max. Throughput	130 g/h (115 cm³/h) with PLA
Nozzle Diameters	0.6 mm, 1.0 mm, 2 mm
Nozzle Temperature	Max. 482 °F (250 °C)
Power	208 V – 240 V, 16 A, 50 / 60 Hz
Safety certifications	CE approved, EC Machinery Directive 2006/42/EC Compliant

* Other filaments upon request

BigRep GmbH (HQ – Europe)

Gneisenaustraße 66
10961 Berlin
Germany
Phone +49 30 20 84 82 60

BigRep America Inc.

50-E Concord Street
Suite 100
Wilmington, MA 01887
United States
Phone +1 781 281 0569

BigRep APAC

BigRep Private Ltd.
201 Henderson Road
Apex@Henderson #03-13
Singapore 159545
Phone +65 6909 8191 / 9793 2515

bigrep.com



Request A Quote